



# ACCENT

ATMOSPHERIC COMPOSITION CHANGE  
THE EUROPEAN NETWORK OF EXCELLENCE

*u<sup>b</sup>*

b  
UNIVERSITÄT  
BERN

## APPENDIX III: Mentor Training

Evi Schuepbach  
University of Berne, Switzerland  
cabo@giub.unibe.ch



ACCENT «Training & Education» (T&E)  
[www.accent-network.org](http://www.accent-network.org)

ENSEMBLES General Assembly, Prague, 12 November 2007



# ACCENT

ATMOSPHERIC COMPOSITION CHANGE  
THE EUROPEAN NETWORK OF EXCELLENCE

*u<sup>b</sup>*

b  
UNIVERSITÄT  
BERN

## Creating Partnerships for Learning about Science

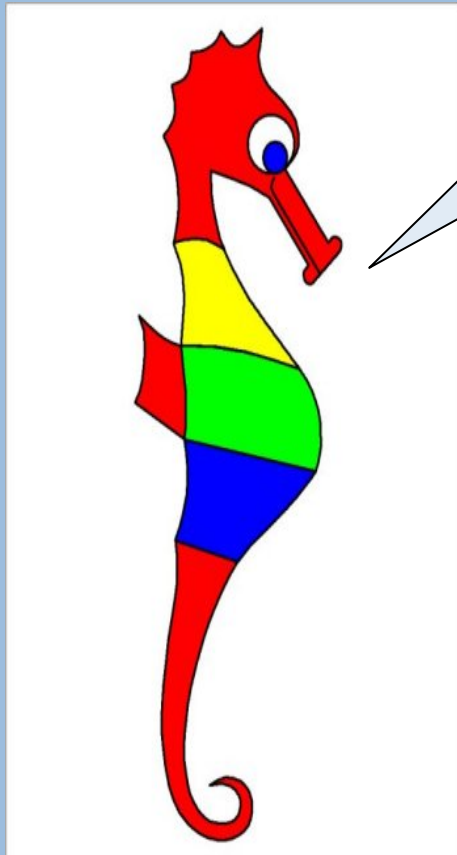
Joint ACCENT/ENSEMBLES Mentoring Programme

Evi Schuepbach  
University of Berne, Switzerland  
cabo@giub.unibe.ch



ACCENT «Training & Education» (T&E)  
[www.accent-network.org](http://www.accent-network.org)

ENSEMBLES General Assembly, Prague, 12 November 2007



I am a sea horse

I am cute

But what is REALLY special  
about me?

my male partner gives birth to our babies !



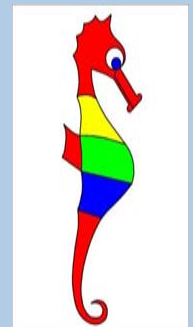
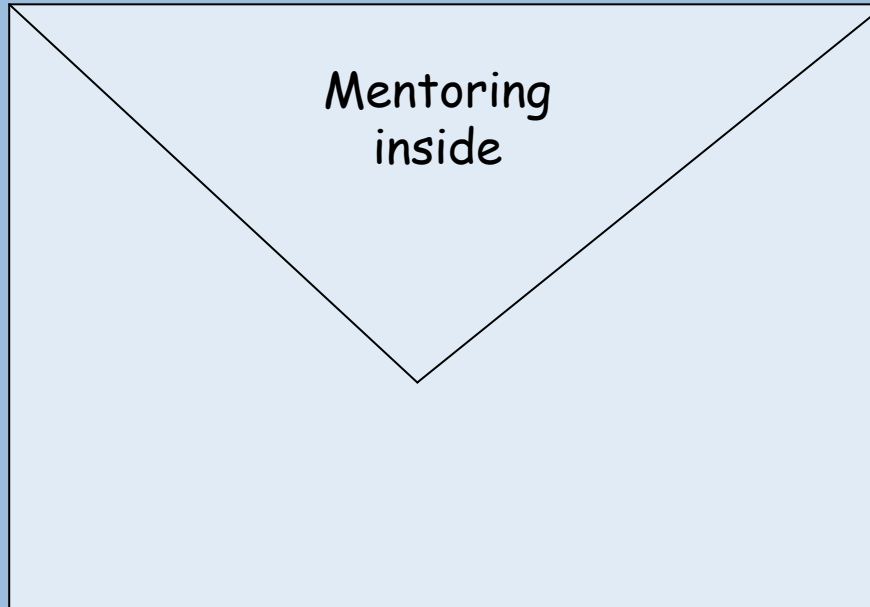
-> nature  
can make career progression difficult

# What is the issue?

*u<sup>b</sup>*

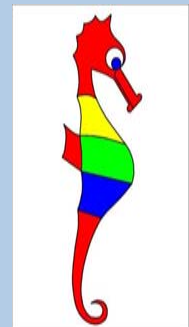
---

b  
UNIVERSITÄT  
BERN



## Mentoring is...

- a relationship/partnership between a Mentor (senior) and a Mentee (junior)
- „muscle training“ to understand and cope with structural blocks and constraints in professional life
- an opportunity for the Mentees to address their issues on career choice when entering the world of work
- a possibility for the Mentors to transfer skills in tackling dilemmas during career progression



# What can Mentoring do for YOU?

**u<sup>b</sup>**

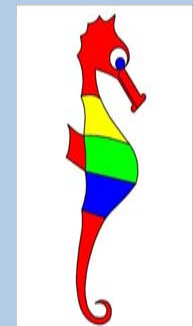
b  
**UNIVERSITÄT  
BERN**

## **Mentor**

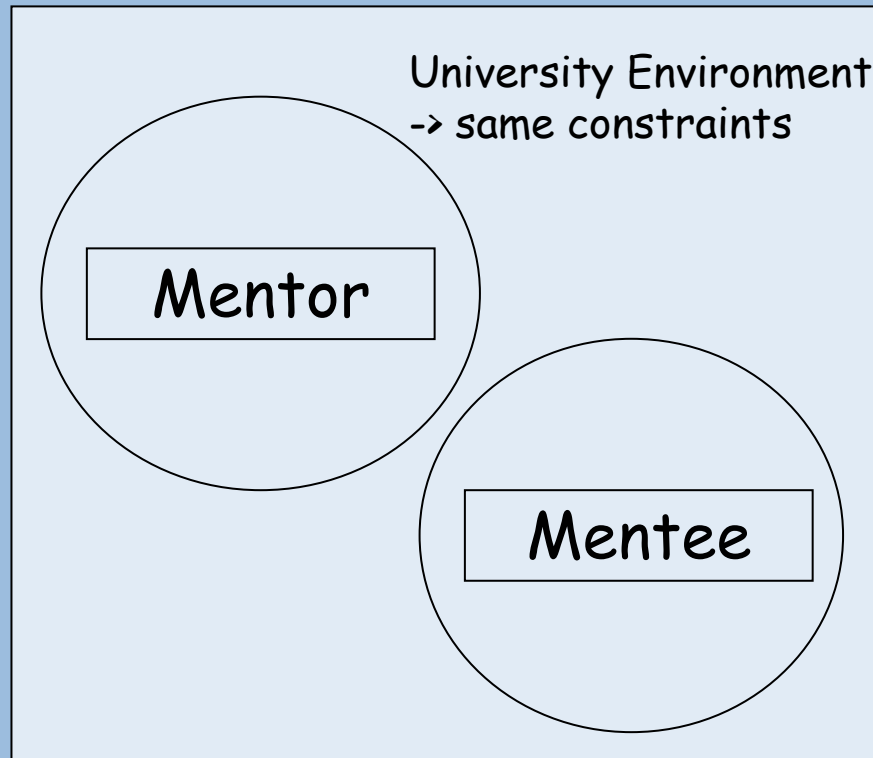
Reflect on your own setting & situation within  
Act as a role model  
Network

## **Mentee**

Establish a professional (mentoring) relationship  
Reflect on your career choice & get advice  
Combat feelings of isolation



# Mentor-Mentee Relationship

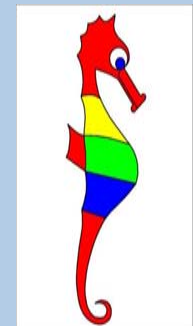


**Level:**  
organisational  
(personal)

## Mentoring Issues (Examples)

What do you keep hitting organisationally that makes life difficult?

What are the professional/academic constraints that hold you back?



# Joint ACCENT/ENSEMBLES Mentoring Programme

## How is it organised?

**2nd ACCENT Symposium, Urbino, Italy (July 2007)**  
Official Launch of ACCENT Mentoring Programme  
(ca. 12 Mentors)

**Call for Mentors/Mentees in ENSEMBLES**  
October/November 2007

**4th ENSEMBLES GA in Prague, November 2007**  
Official Launch of ENSEMBLES Mentoring Programme  
(7 Mentees / 4 Mentors)

# Joint ACCENT/ENSEMBLES Mentoring Programme

u<sup>b</sup>

b  
UNIVERSITÄT  
BERN

## How is it organised (cont.)?

### Review Meeting / Plenary Meeting

Organised by ACCENT in 2008 / early 2009  
(funding of ENSEMBLES Mentor-Mentee Pairs?)

### (Joint) Publication

as part of the ACCENT T&E Synthesis (2009)

### Links with other EU Projects

EUCAARI, GEOMONT, etc.

### New EU Project

Next suitable call (with US partners)

## Schedule

18.30 - 19.00 hrs

Introduction

Discussion on Expectations, Goals and Schedule  
Mentor-Mentee Pairs (based on EoI)

19.00 - 19.30 hrs

Break

19.30 - 20.15 hrs

Mentor-Mentee Pairs discussing Mentor Contract

20.15 - 20.30 hrs

Reporting to the Plenary  
Further Procedure

